


STEPS TO ADD GOOGLE.COM AS A TRUSTED SITE FOR ePACES CAPTCHA

When users attempt to sign on to ePACES from the www.emedny.org website he/she will be asked to enter an alpha-numeric number displayed on the sign on screen in order to gain access to the ePACES account.

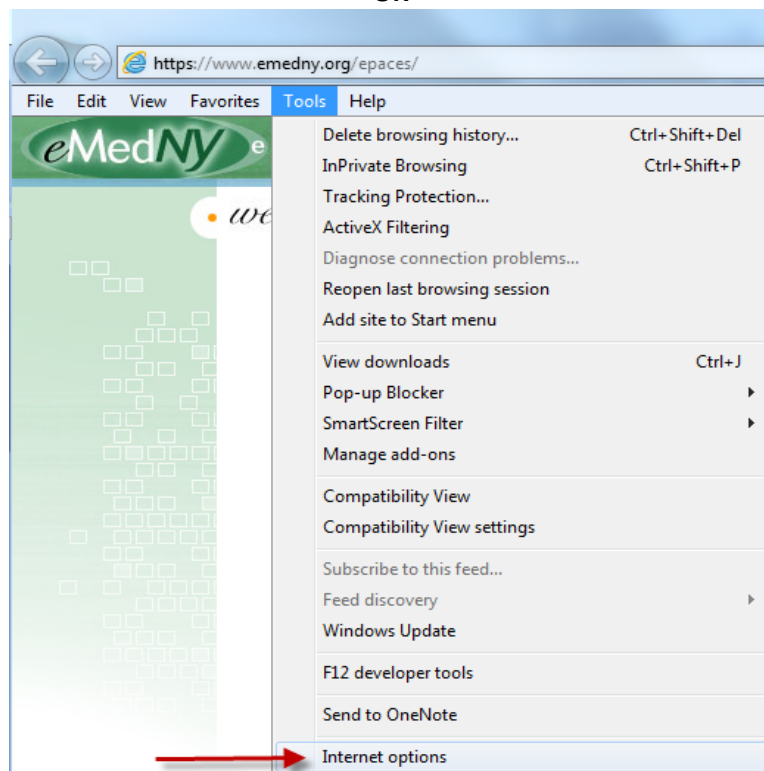
If you are unable to view the Captcha tool or if you are requested to add a trusted internet site, follow the steps below.

PLEASE NOTE: Due to user rights limitations, you may have to contact your local desktop support staff in order to successfully perform the steps detailed below.

1. Click on  in the right-hand corner of the Internet Explorer browser **or** in the **Tools** menu, click on **Internet Options**, as shown in the examples below:

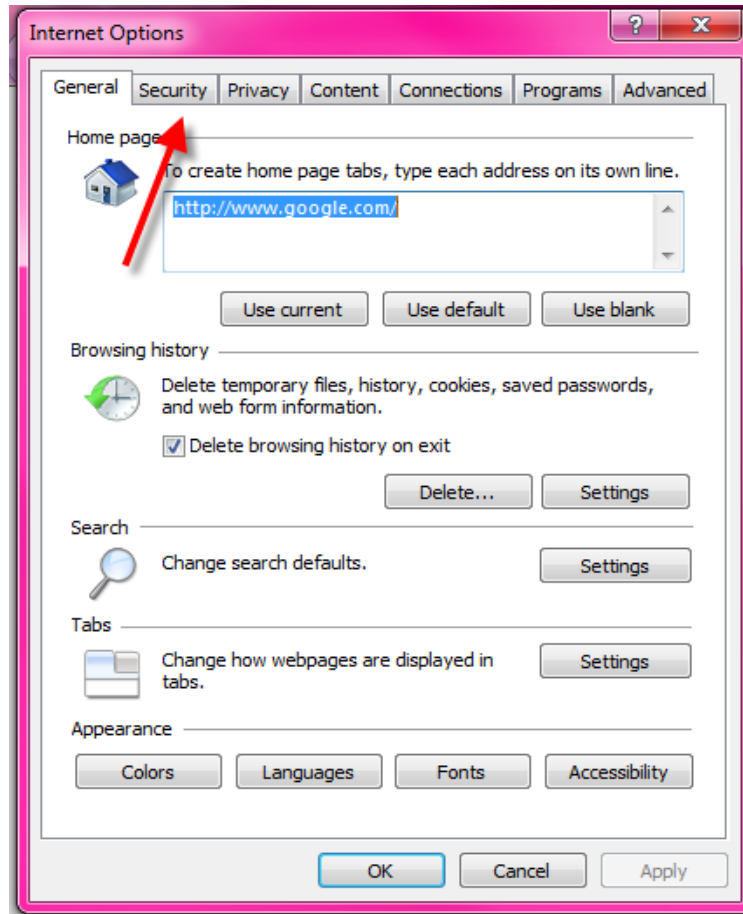


OR



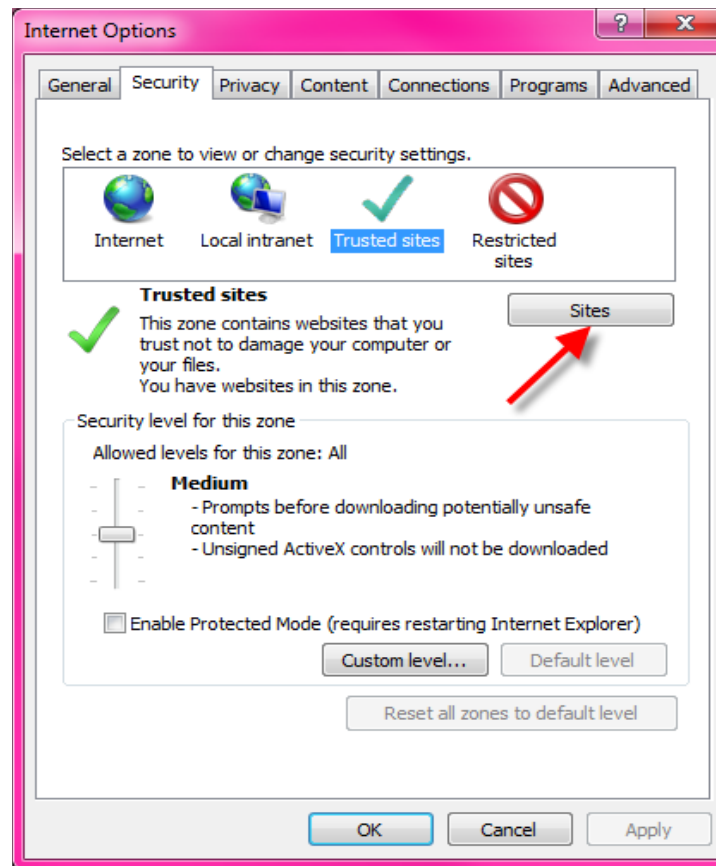
STEPS TO ADD GOOGLE.COM AS A TRUSTED SITE FOR ePACES CAPTCHA

- The Internet Options window will appear. Choose the **Security** tab :



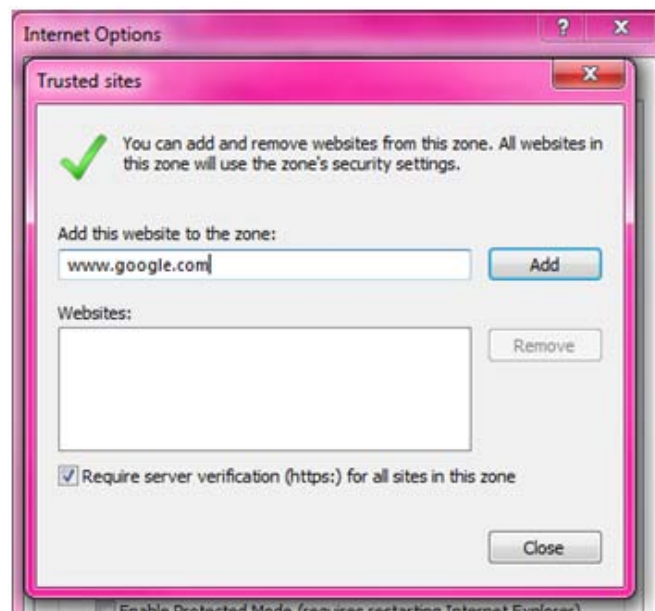
- The Security tab will appear. Click on **Sites**:

STEPS TO ADD GOOGLE.COM AS A TRUSTED SITE FOR ePACES CAPTCHA



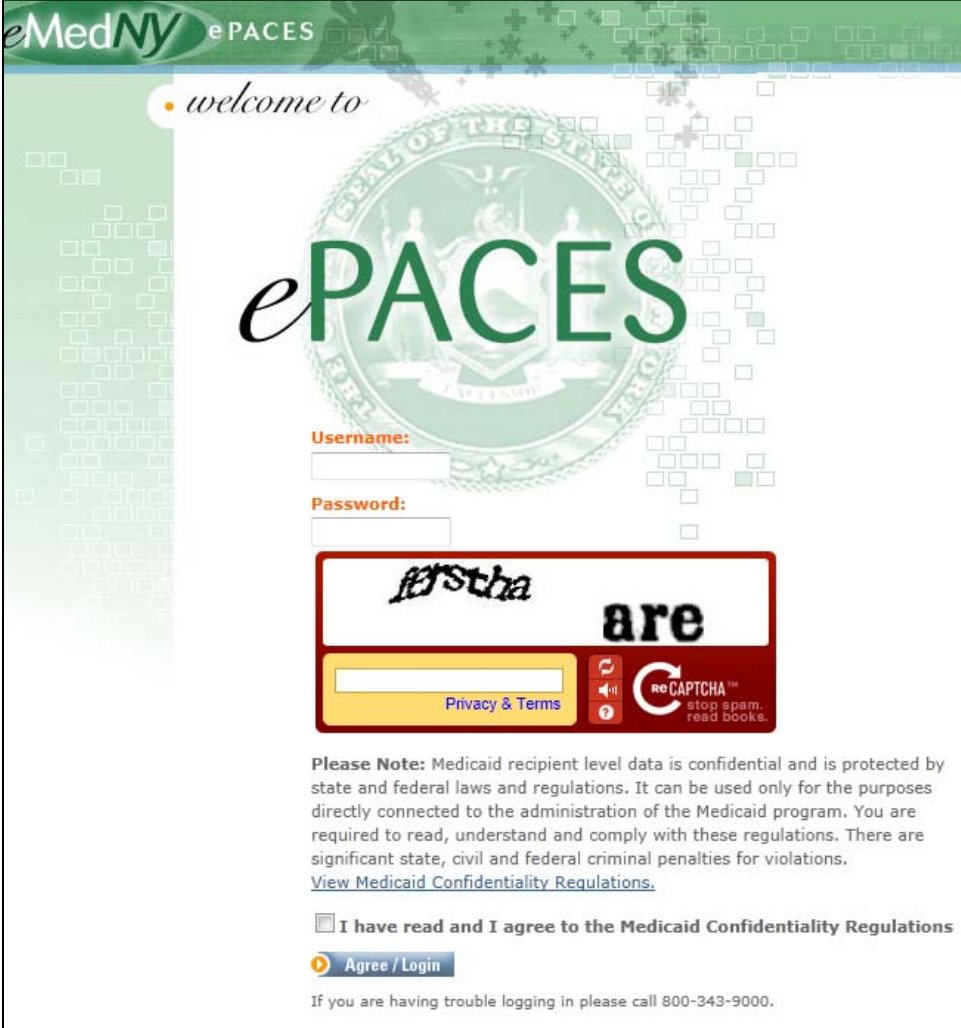
A pop-up called Trusted Sites will next appear.

4. In the "Add this website to the zone:" field, type `www.google.com`, as shown below.
5. Click **Add** and then click **Close**.



STEPS TO ADD GOOGLE.COM AS A TRUSTED SITE FOR ePACES CAPTCHA

6. Refresh the browser. If this was successful, the ePACES logon screen will look like this:



eMedNY ePACES

welcome to

ePACES

Username:

Password:

firstha are

Privacy & Terms

reCAPTCHA™
stop spam.
read books.

Please Note: Medicaid recipient level data is confidential and is protected by state and federal laws and regulations. It can be used only for the purposes directly connected to the administration of the Medicaid program. You are required to read, understand and comply with these regulations. There are significant state, civil and federal criminal penalties for violations. [View Medicaid Confidentiality Regulations.](#)

I have read and I agree to the Medicaid Confidentiality Regulations

Agree / Login

If you are having trouble logging in please call 800-343-9000.