



Installation Guide

SigWeb

Copyright © Topaz Systems Inc. All rights reserved.

For Topaz Systems, Inc. trademarks and patents, visit www.topazsystems.com/legal.

Table of Contents

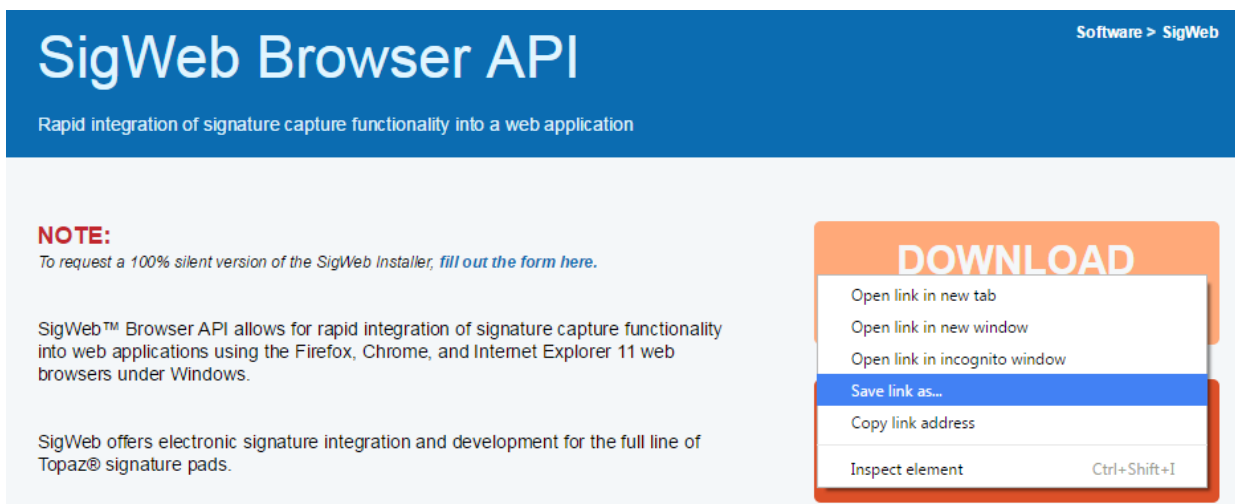
Steps.....	3
<i>First-Time Install Steps.....</i>	<i>3</i>
<i>Re-Installation Steps.....</i>	<i>5</i>
Contact	8

Steps

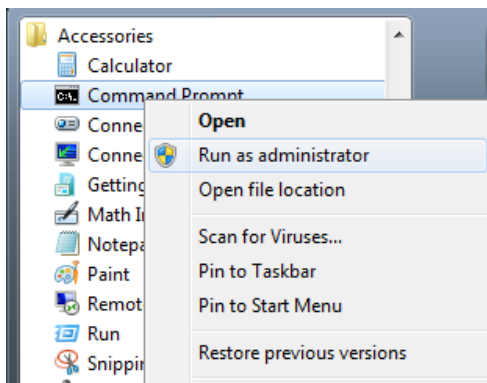
First-Time Install Steps

Follow Steps 1-6 here if you have never installed SigWeb before:

1. Visit the SigWeb webpage at the following link: www.topazsystems.com/sigweb.html.
2. On this page, there are two **DOWNLOAD** options on the right side of the page, depending on your particular signature pad model. Right-click on the correct **DOWNLOAD** button for your model, and select “Save link as...”. Navigate to the “C:” location on your local computer, and save the installer directly in the “C:” folder.

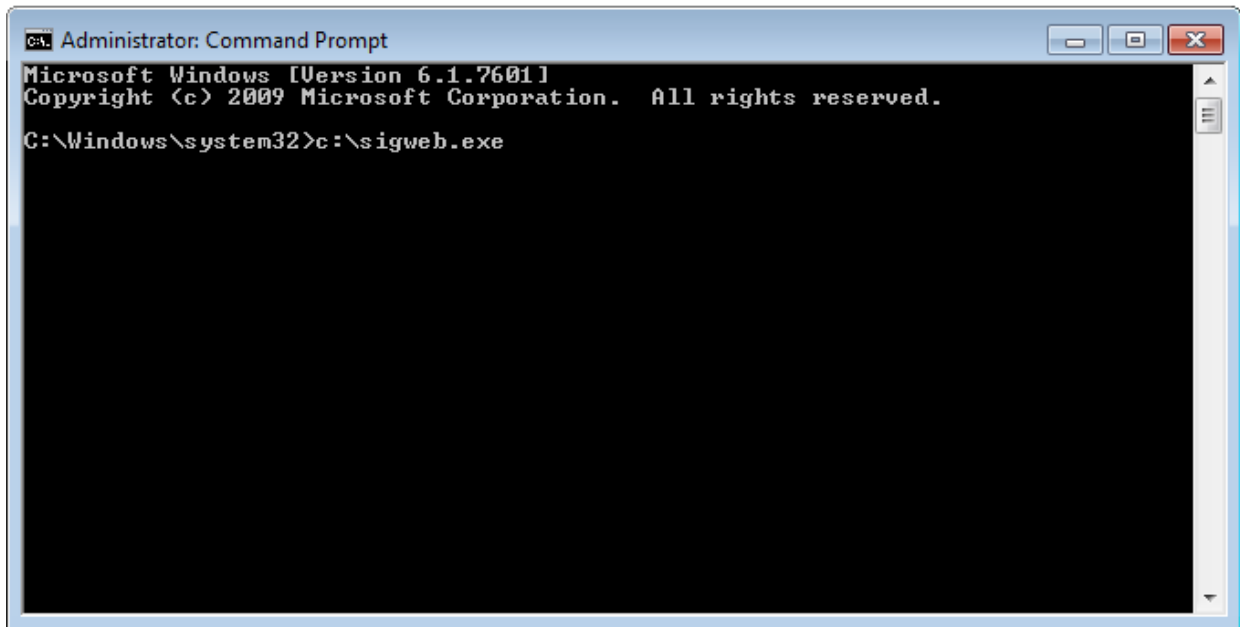


3. Before installing, be sure to close all open browsers (i.e. Chrome, Firefox, Internet Explorer, etc).
4. Click on “Start” → “All Programs” → “Accessories”. Right-click on “Command Prompt” and choose “Run As Administrator” to open an elevated command prompt window.



- In the elevated command prompt window, type in the path to the sigweb.exe installer:

c:\sigweb.exe



Then, click “Enter” to run it. This is a critical step, as it will allow the SigWeb installer appropriate access for installation purposes. Follow the installer through, making the appropriate choices for your signature pad as you go.

- Once complete, test this page: www.sigplusweb.com/sigwebtablet_demo.htm. Click “Sign” and sign on your signature pad; your signature will appear in the signature box.

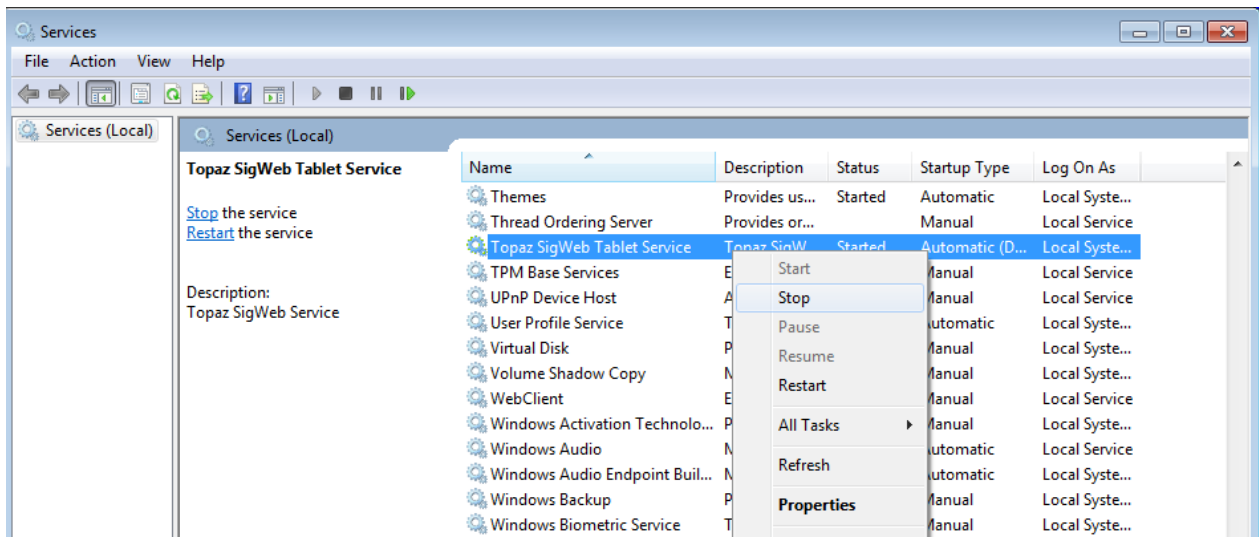


SigString:	Base64 String:
------------	----------------

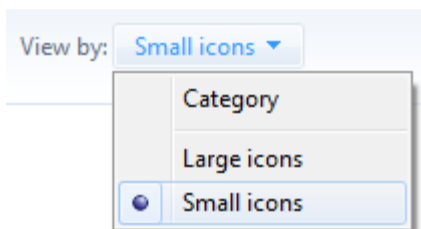
Re-Installation Steps

Follow Steps 1-9 here if SigWeb has already been installed and you are performing a re-install:

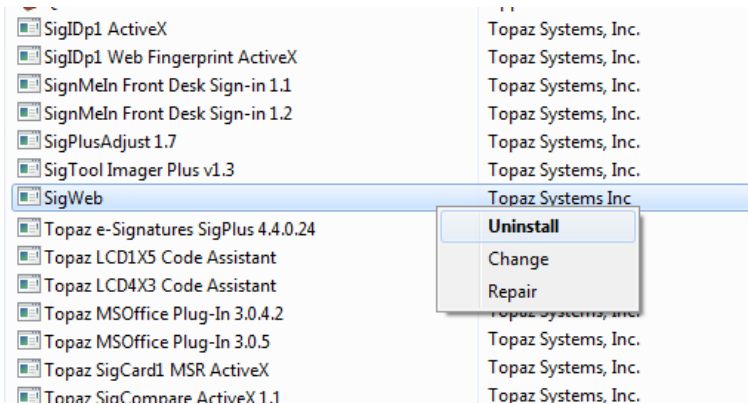
1. Log into your computer using your Administrator-level account.
2. In your list of Services (under “Start” → “Control Panel” → “Administrative Tools” → “Services”), locate the “Topaz SigWeb Tablet Service” and stop it (right-click on it and choose “Stop”).



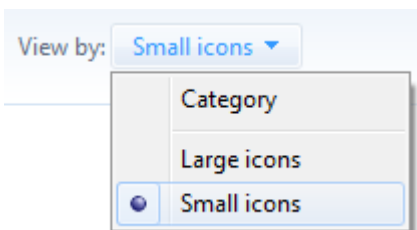
NOTE: If you do not see the “Administrative Tools” option under the “Control Panel”, click “View by:” in the top right of your window, and select “Small icons”.



- Under “Start” → “Control Panel” → “Programs and Features”, right-click on “SigWeb”, and choose “Uninstall”. Allow the “Uninstall” to complete.



NOTE: If you do not see the “Programs and Features” option under the “Control Panel”, click “View by:” in the top right of your window, and select “Small icons”.



- Visit the SigWeb webpage at the following link: www.topazsystems.com/sigweb.html.
- On this page, there are two **DOWNLOAD** options on the right side of the page, depending on your particular signature pad model. Then, right-click on the correct **DOWNLOAD** button for your model, and select “Save link as...”. Navigate to the “C:” location on your local computer, and save the installer directly in the “C:” folder.

SigWeb Browser API

Software > SigWeb

Rapid integration of signature capture functionality into a web application

NOTE:
To request a 100% silent version of the SigWeb Installer, [fill out the form here](#).

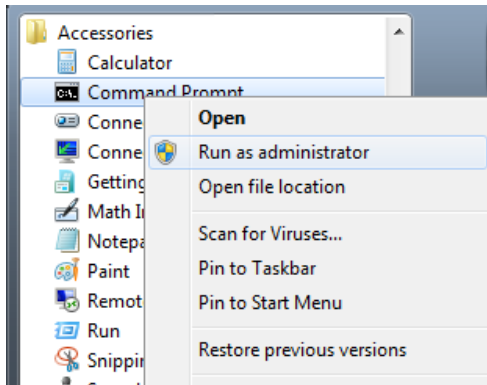
SigWeb™ Browser API allows for rapid integration of signature capture functionality into web applications using the Firefox, Chrome, and Internet Explorer 11 web browsers under Windows.

SigWeb offers electronic signature integration and development for the full line of Topaz® signature pads.

DOWNLOAD

- Open link in new tab
- Open link in new window
- Open link in incognito window
- Save link as...
- Copy link address
- Inspect element Ctrl+Shift+I

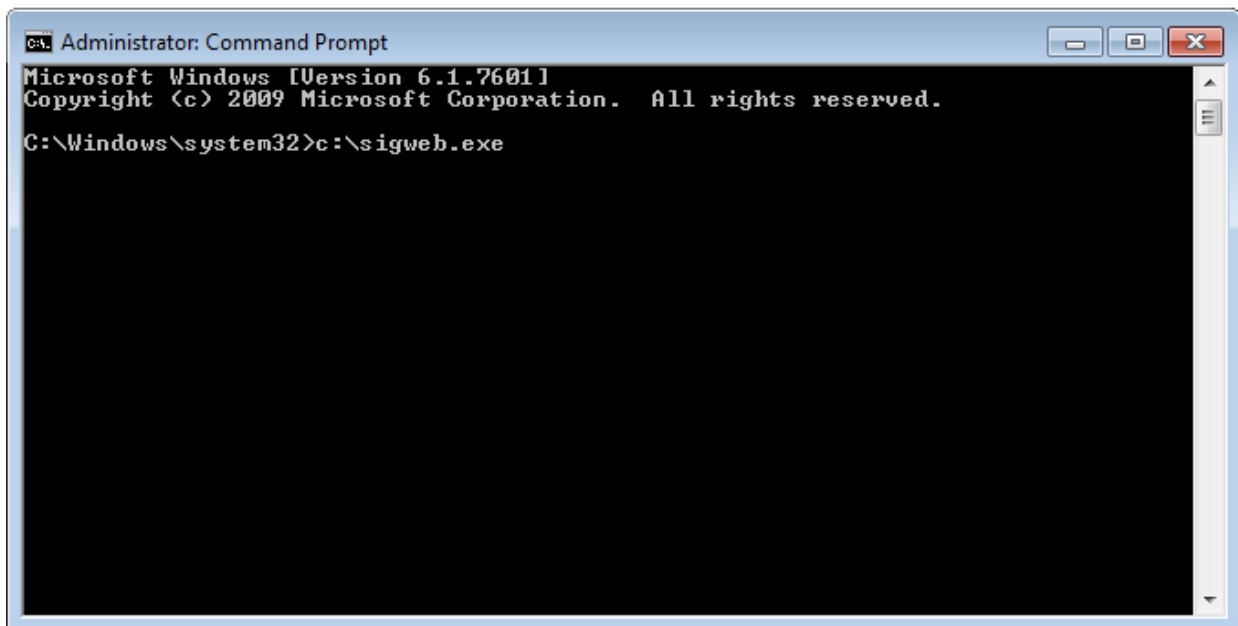
6. Before installing, be sure to close all open browsers (i.e. Chrome, Firefox, Internet Explorer, etc).
7. Click on “Start” → “All Programs” → “Accessories”. Right-click on “Command Prompt” and choose “Run As Administrator” to open an elevated command prompt window.



8. In the elevated command prompt window, type in the path to the sigweb.exe installer:

c:\sigweb.exe

Then, click “Enter” to run it. This is a critical step, as it will allow the SigWeb installer appropriate access for installation purposes. Follow the installer through, making the appropriate choices for your signature pad as you go.



9. Once complete, test this page: www.sigplusweb.com/sigwebtablet_demo.htm. Click “Sign” and sign on your signature pad; your signature will appear in the signature box.



SigString:	Base64 String:

Contact

For installation support, contact Topaz Tech Support at techsupport@topazsystems.com.

For developer support, contact Topaz Dev Support at devsupport@topazsystems.com.